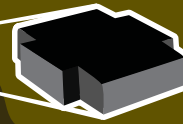




DSi MOBILE



Dispatchers can access DSi Mobile from any browser on any computer at any location.



Devices transmit location and operation data to the system for tracking and monitoring



DSi Mobile Manager connects them all

Drivers with certain devices can also receive data while on the road:

- load info
- directions
- special instructions



Managers receive business rules based alerts by SMS and email

Know where your trucks are, no matter where YOU are

The DSi Mobile Manager, a cloud-based solution that can be used as a stand-alone application or in conjunction with DSi Service Manager and/or Transport Manager. Mobile Manager allows centralized information to be accessed by web portal and also via certified mobile devices.

Mobile Manager's online interface starts with dots on a map, but goes so much farther. In Map View, trucks are color coded to show connectivity status and clicking a truck's icon allows access to "breadcrumb mode". Through this location history tool, you can track where each vehicle has been for the past day, the past week, or any given time frame.

Geofencing is another integrated aspect of Mobile Manager. Track vehicles individually or in groups, and receive alerts when they cross pre-set boundaries. Instant dispatch notification of a truck going beyond its parking or delivery zone increases driver accountability and limits unauthorized vehicle use.

DSi offers two mobile devices options to suit your operation's needs. The DSi M507 runs a feature-rich mobile application including load management and two-way messaging integration. Both the touchscreen M507 and the VT101 "black box" collect truck location, speed and status.



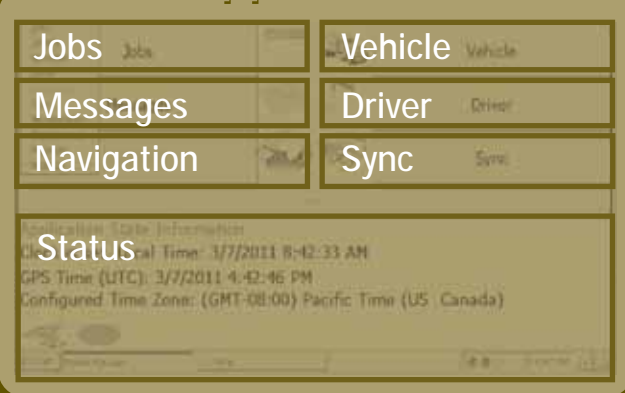


Full color plus two-way messaging

Using Dispatching Solutions Mobile Manager Application, the M507 allows you to route a load to its destination with the push of a single button. The full color screen and intuitive interface allow for easy use and simplified navigation.

Also available is a mounting stand to affix the unit inside a vehicle. This allows a driver to check the M507 for updates, information, or directions with just a glance.

Mobile Application



Easy data access for drivers

Jobs - See available, and active loads, plus load status

Messages - Receive messages from dispatch, and reply with a pre-written or freeform message

Navigation - Optional routing add-on

Vehicle - Access truck status, odometer, and fuel data

Driver - Set driver status as on duty, off duty, or on break

Sync - Directs device to sync with central servers

Status - For technicians in the shop/field and transportation of equipment to any location.

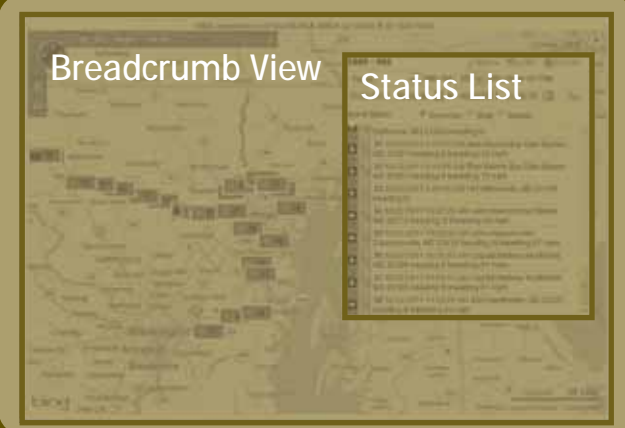


Affordable in-dash GPS option

The VT 101 is made to be installed inside the dashboard of the vehicle to be tracked. The unobtrusive design uses very little power, but still records valuable location and status information to relay back to the central Mobile Manager servers.

The ET 101, boasts all these features plus waterproofing for all-condition operation.

DSi Web Portal



Track a truck's location over time

Breadcrumb View - After selecting a truck and time frame, DSi Mobile Manager displays the truck's progressive locations during that time period.

Status List - View in detail each report transmitted by the assigned mobile device. Besides time, location, and status, our devices keep track of vehicle speed and direction of travel.