



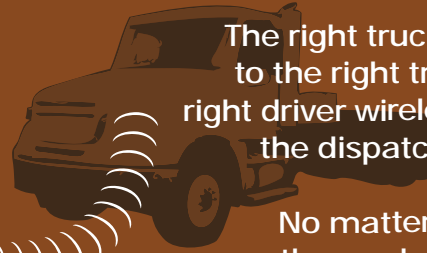
DSi TRANSPORT MANAGER



Any time customer calls reach dispatch



paperless dispatch orders are created in the system



The right truck is matched to the right trailer and the right driver wirelessly receives the dispatch order data.

No matter where he is, on the road or in the yard.



Based on company rules, management receives SMS and email alerts.



DSi Transport Manager makes it all possible

Improve fleet use by up to 30% and save money on fuel

By focusing on the needs of the construction services industry, DSi has created specialized tools to address the needs of heavy haul, bulk materials and flatbed transport logistics companies.

Transport Manager is streamlined to fit into your workflow and house all the data you need. Set up templates for quotes, orders and dispatches and other common tasks then re-use them for fast and accurate data input.

Our extensive, pre-built database of machine information makes decision-making easy. Input

equipment model numbers to find the right dimensions, match them to the right trailer, then input the skills and expertise required to find the right driver.

Data from multiple systems is integrated and immediately available for cross referencing, no matter the status of the order. Reports can be generated instantly for research and business analysis purposes. Search and filter functions are built-in so data is interactive and easier to analyze. Intuitive menus and search fields make it simple to find exactly what you're looking for.



Dashboard: Timeline View



Whiteboard-style schedule layout

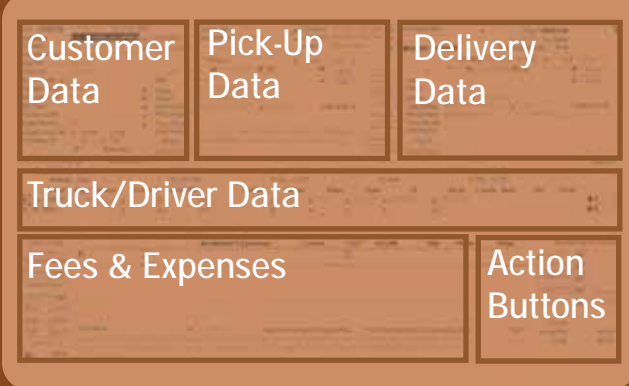
Search Parameters - Select a range of dates to view, based on creation date, pick up date, or delivery date

Search Filters - Group and subgroup results by status, location, dispatcher, date, customer, or many other options

Driver List - Show drivers, subhaulers, or both, and sort by name, ID, or truck group.

Timeline Schedule - Get a broad view of drivers and orders by seeing jobs laid out in a calendar, then re-arrange trucks and loads to balance driver duties.

Work Order: Main View



Add all order info on one screen

Customer Data - Company name, number, contact

Pick-Up Data - Enter manually, or auto-fill from records

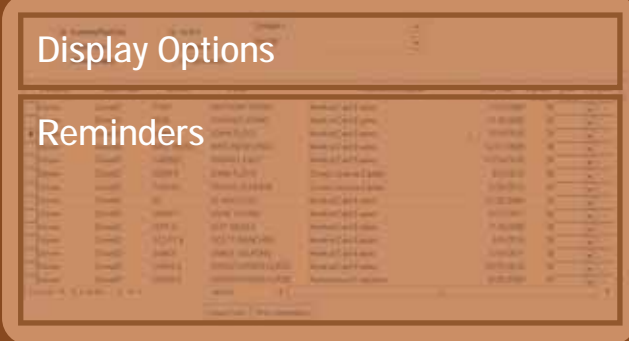
Delivery Data - Input location, calculate distance, and specify a specific time or acceptable delivery window

Truck/Driver Detail - Input truck and trailer details, and track driving hours by segment, truck, and driver.

Fees and Expenses - Calculate all the details that change an order's expense, from permit fees to commissions to operational surcharges.

Action Buttons - Easy access to process a quote, request confirmation, dispatch an order, or prepare an invoice

Reminders



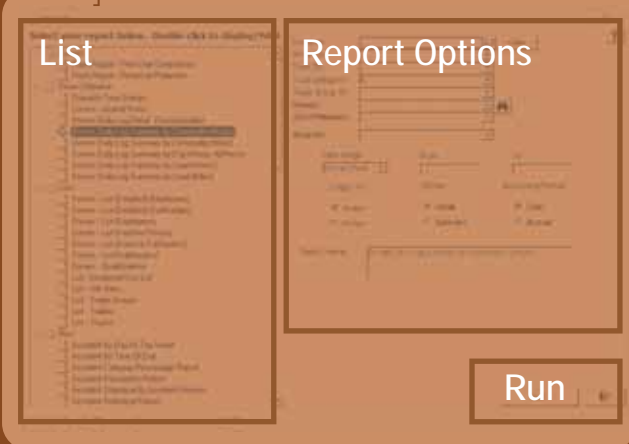
Keep up-to-date with keeping in touch

Display Options - Select whether to display current, active, completed, or past-due reminders, and also how they should be sorted, category, type, due date, and user.

Reminders - On Driver, Customer, and Truck pages, users can create notes for recurring or one-time follow-up actions.

Reminder Notifications - Upon login and on the dashboard screen, dispatchers can see how many active and past due reminders are waiting for them here.

Reports



Crunch the numbers in a few clicks

List - Pick one of over 100 reports in categories including Driver Utilization, Annual Comparisons, Revenue Analysis, or use the report writer to compare data from any entry field

Report Options - Narrow-down results to get just the information you need

Run - Generate a report that can be printed or exported as a spreadsheet, text file, pdf, or rtf document